



SAMA



SAMA Landscape Architects is a design firm offering specialized services in Landscape Design. We have been working on Landscape projects of varied scales and kinds in many parts of the country.

Name of Firm : SAMA Landscape Architects.

Organization type : Partnership firm.

Date of commencement : 2005

Location : Pune , Maharashtra.

Office Address : 5-Anand Apts, Veerbhadranagar, Pancard Club Road, Near Vasant Vihar, Baner, Pune

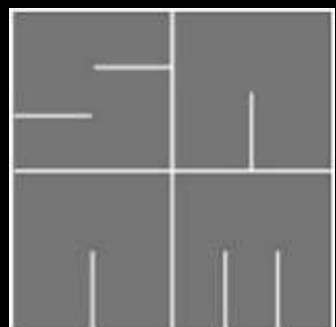
Contact Office : +918888810553 , +912027219263

Website /Link : [www.samalandscape.in](http://www.samalandscape.in)  
<https://www.facebook.com/pages/SAMA-Landscape-Architects/282319748447353>

Areas of Specialization : Landscape consultancy

Name : Ms. Manjiri Mahajan ( Partner ) +919822647898  
: Mr. Sameer Duraphe ( Partner ) +919822887538

Over a period of time having worked with several reputed organization SAMA has gathered an experience in the field of landscape design. We provide design solutions for projects ranging from Residential, Institutional, corporate, Recreational to Restoration at different part of country including, Mumbai , Pune, Kolhapur, Goa, Karad, Nasik, Solapur , Ratnagiri, Gujrat and Karnataka.







Name : Ms.Manjiri Mahajan ( M.L.Arch.)  
Position : Partner in SAMA LANDSCAPE ARCHITECTS since inception in year 2005

EDUCATION :

1. Masters in landscape Architecture, from CEPT Ahmedabad, India in March 2002  
( Indian society of Landscape Architect's registered associate member.)

Visiting faculty at Masters Programme in landscape architecture BNCA Pune  
External examiner and juror at various colleges.

Registered Fellow member of ISOLA.  
(Indian Society of Landscape Architects)  
Member of Council of Architecture



Name Mr.Sameer Duraphe (B.Arch.)  
Position : Partner in SAMA LANDSCAPE ARCHITECTS since inception in year 2005

Ms. Shreya Shah  
Senior Landscape Architect

Office Setup :

Area office premises : 800 SQ.FT.

Ms. Mrunal Ayachit  
Senior Architect

Team : 7 architects, 2 Interns

Ms. Sayali Vaidya  
Senior Architect

Laptop / computers : 8 no.

Ms. Radhika Suryawanshi  
Senior Architect

Printer / Plotter : A1 and A3 Size.

Ms. Aditi Borikar  
Landscape Architect

Licensed softwares :  
Autocad, M.S.office, Operating systems,  
Sketch up , Photoshop , anti virus.

Ms. Abha Hawal  
Architect

Mr.Pranav Parab  
Landscape Architect



Mail id : [info@samalandscape.in](mailto:info@samalandscape.in)





## SAMA Publications and Awards :

1. Isola General Design award. 2018  
Capgemini campus - Hinjewadi
2. Thicket park, Lavasa , Pune  
ESEEED magazine - Jan 2013  
LA Journal of landscape architecture 2015
3. EBIL corporate office , Pimpri

AESA Best project award in the non-residential category for year 2013

A & I award for best project 2012

Builders Association award 2012

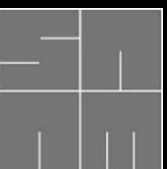
JK Super cement. 2015

4. Panel display in A & I exhibition in the award winning category in 2013
5. Restoration of Vithal Mandir Aundh , Pune.  
All India Stone Architecture Award. 2013  
AISAA C-DOS Award in restoration category.

Published in ESEEED magazine – April 2014

6. Pune landscape practices.  
LA Journal of Landscape Architecture 2015.
7. Indian Express – SAMA office.
8. Praj Tower –Hinjewadi  
La Journal of Landscape architecture 2105
9. Bungalow in Nasik and Pune  
Inside Outside September 2016

10. The Guardians of Natural Design – Design Pataki.





PROJECT NAME	CLIENT	ARCHITECT	PROJECT AREA
--------------	--------	-----------	--------------

### REISIDENTIAL

1	The Royal Village- Vapi	Kakaria Housing	Ar. Manish Doshi	42 acre
2	Godrej – Manjari - Pune	Godrej Properties Ltd.	Studiopod - KAPL	10 acre
3	Parksyde Homes - Nashik	Jaykumar Construction Ltd.	Ar. Umesh Bagul	17 acre
4	Gera 's POJ	GERA Developers	Gera -In house	15 acre
5.	Treeland - Nashik.	ABH Developers	Ar. Umesh Bagul	16 acre

### CORPORATE

1	Capgemini India –Hinjewadi	Capgemini	DSP	35 acre
2	Capgemini India -Airoli	Capgemini	DSP	31 acre
3	Embassy Tech Park Pune	Embassy	RSP ( Bangalore)	05 acre
4	Praj Industries	Praj	Group Phi Architects	03 acre
5	Elantes Beck Corporate Office - Pimpri	EBIL	Core Architecture	03 acre
6	Gera's Imperium Gateway	GERA Developers	Gera In house	12 acre

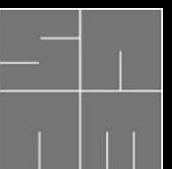
### HOSPITALITY AND LAYOUT

1.	Grape County -Nashik.	Green spaces asia	Ar. Shabbir Unwala	50 acre
2.	Casuarina and Bougainville	Synergy Properties	Group Phi architects	100 acre
3.	Accor Novotel- Lavasa	Lavasa	Stephen O Dell	09 acre
4.	Krishna Institute of medical science	KIMSDU	Genesis	60 acre
5.	Memorials – at NDA	PMC	SAMA	04 acre
6.	Memorial for Late.Shri.VilasraoJI Deshmukh	MSSSK Latur	SAMA	04 acre
7.	International Exhibition Centre at PCNTDA	Landmark Design Group	Usha Rangarajan	40 acre

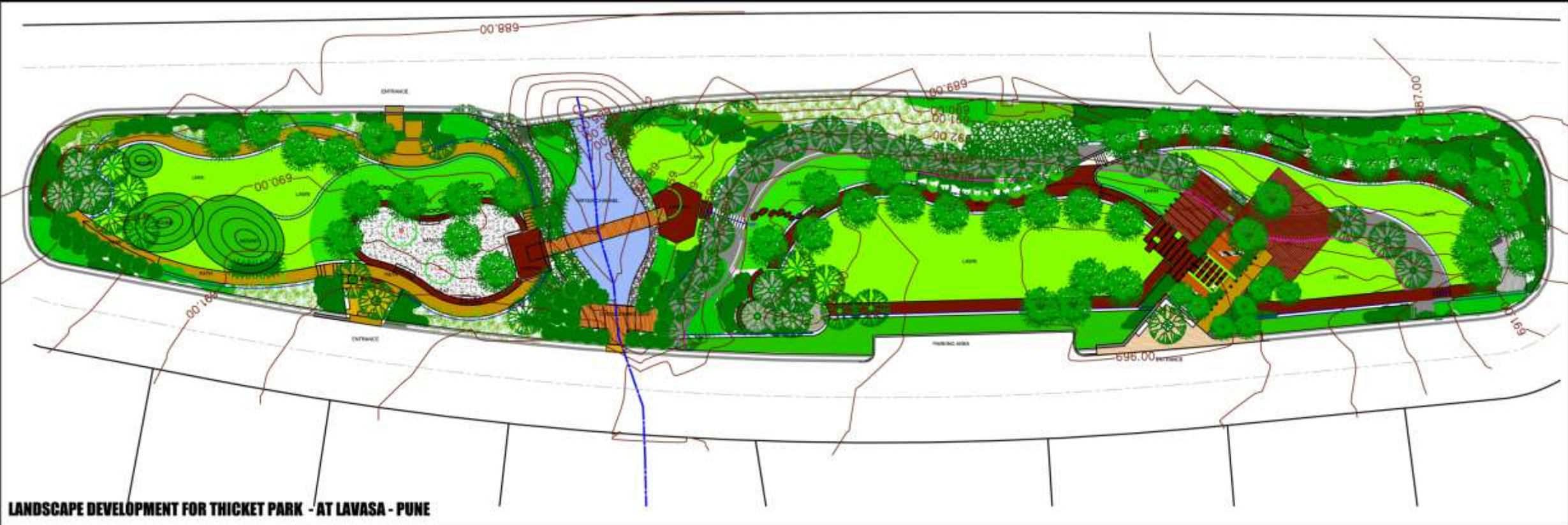




Form is an element of art. At its most basic, a form is a three-dimensional geometrical figure as opposed to a shape, which is two-dimensional, or flat. Landscape design includes the elements of unity, scale, balance, simplicity, variety, emphasis, and sequence as they apply to line, form, texture, and color.







LANDSCAPE DEVELOPMENT FOR THICKET PARK - AT LAVASA - PUNE

CONCEPT :

The garden is looked upon as a place which offers a variety of experiences – both physical and psychological.

It is an assimilation of ground, plants and activities involving people, which together contribute in rendering a character to it which is unique and yet dynamic.

It would appear stunningly different in various seasons of the year, and would offer something for people of all ages to engage their minds for long hours.





R E S I D E N T I A L S C H E M E S



THICKET PARK - LAVASA







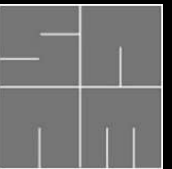
THICKET PARK - LAVASA







THE ROYAL VILLAGE





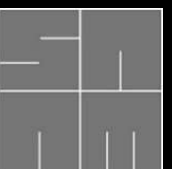
S C H E M E S



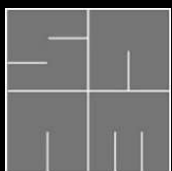
R E S I D E N T I A L



ROYAL VILLAGE - VAPI



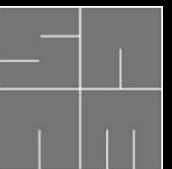








OASIS - VAPI







KENISHA - High End Bungalows – Pali – On going







RESORT

**K E N I S H A - High End Bungalows – Pali – On going**

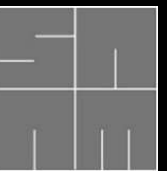






RESORT

GRAPE COUNTY – Nashik – Ongoing







RESORT

GRAPE COUNTY – Nashik – Ongoing

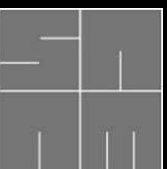






RESORT

GRAPE COUNTY – Nashik – Ongoing





RESORT



GRAPE COUNTY – Nashik – Ongoing







GRAPE COUNTY – Nashik – Ongoing







RESORT

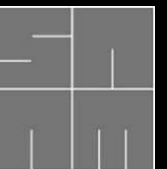
BOUGAINVILLA – CASURINA NEAR BHOR – Synergy – Gangotri







**BOUGAINVILLA – CASURINA ( Holiday Village) Near Bhor – Synergy – Gangotri**





S C H E M E S



R E S I D E N T I A L



PARKSYDE HOMES – NASHIK





R E S I D E N T I A L S C H E M E S



PARKSYDE HOMES – NASHIK





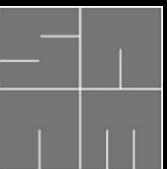
R E S I D E N T I A L S C H E M E S



PARKSYDE HOMES – NASHIK



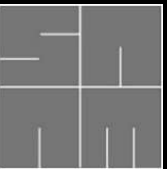




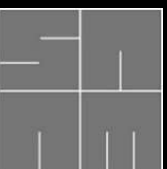




TREELAND – NASHIK



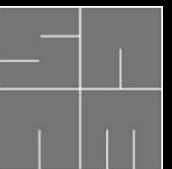




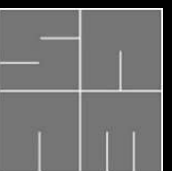




Godrej Properties Ltd. – Manjari – Sector 7 – Boulevard - Ongoing



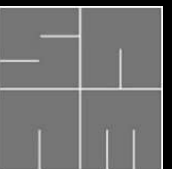




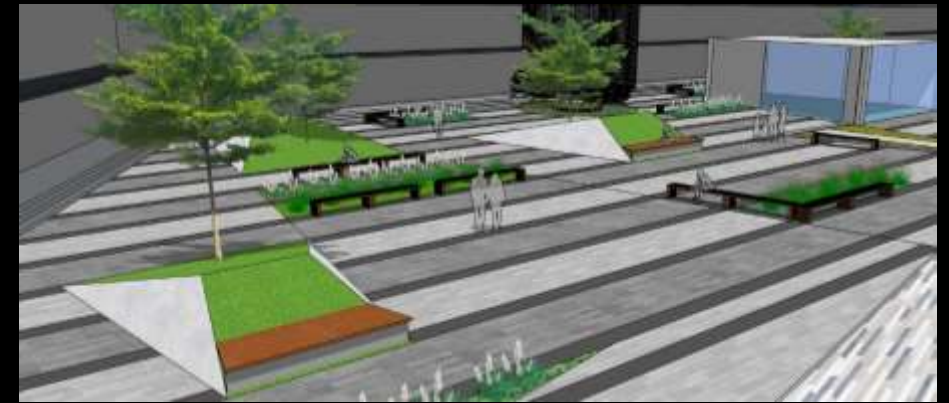




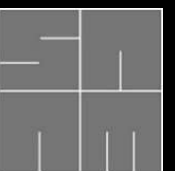
GERA – Planet of Joy - Ongoing



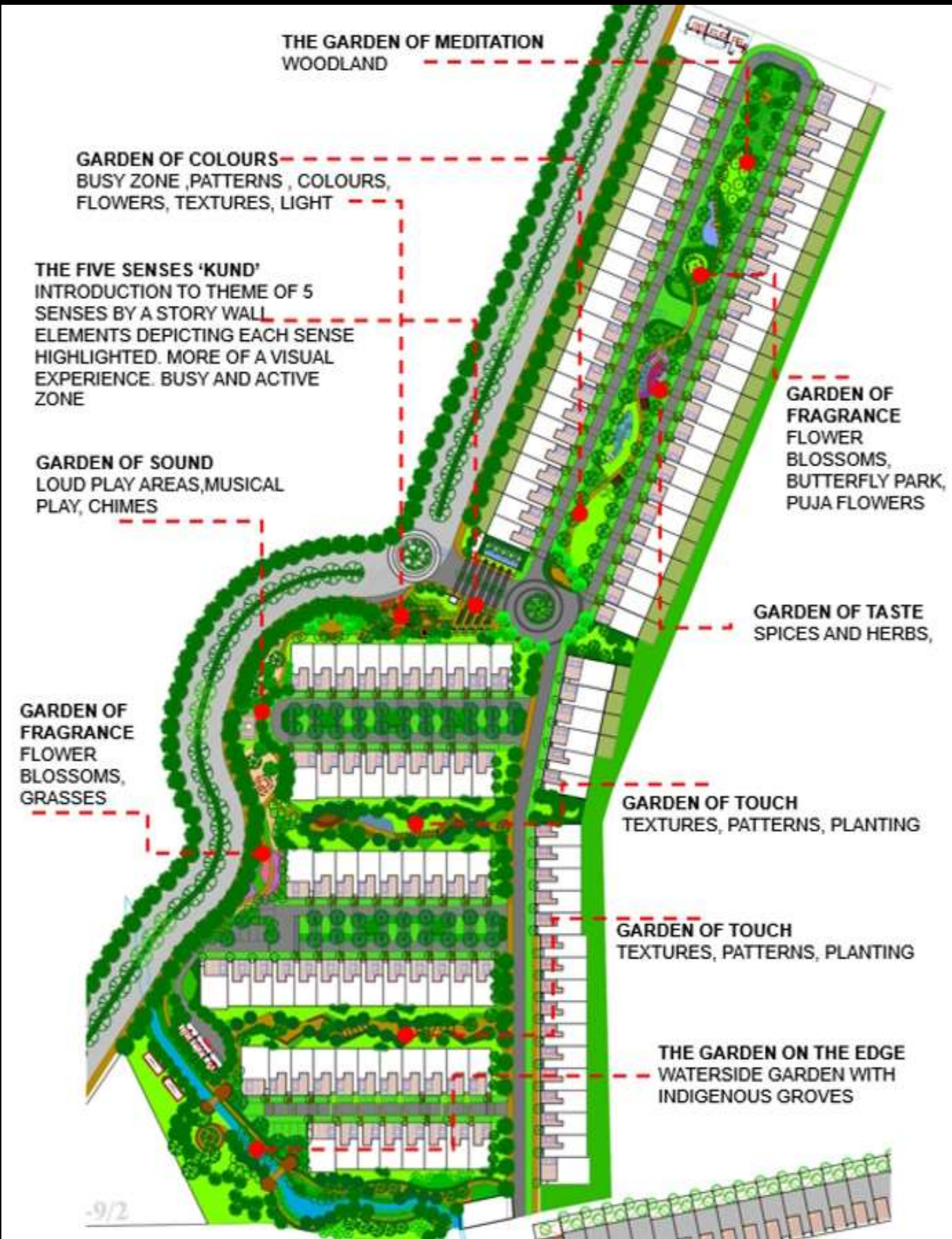




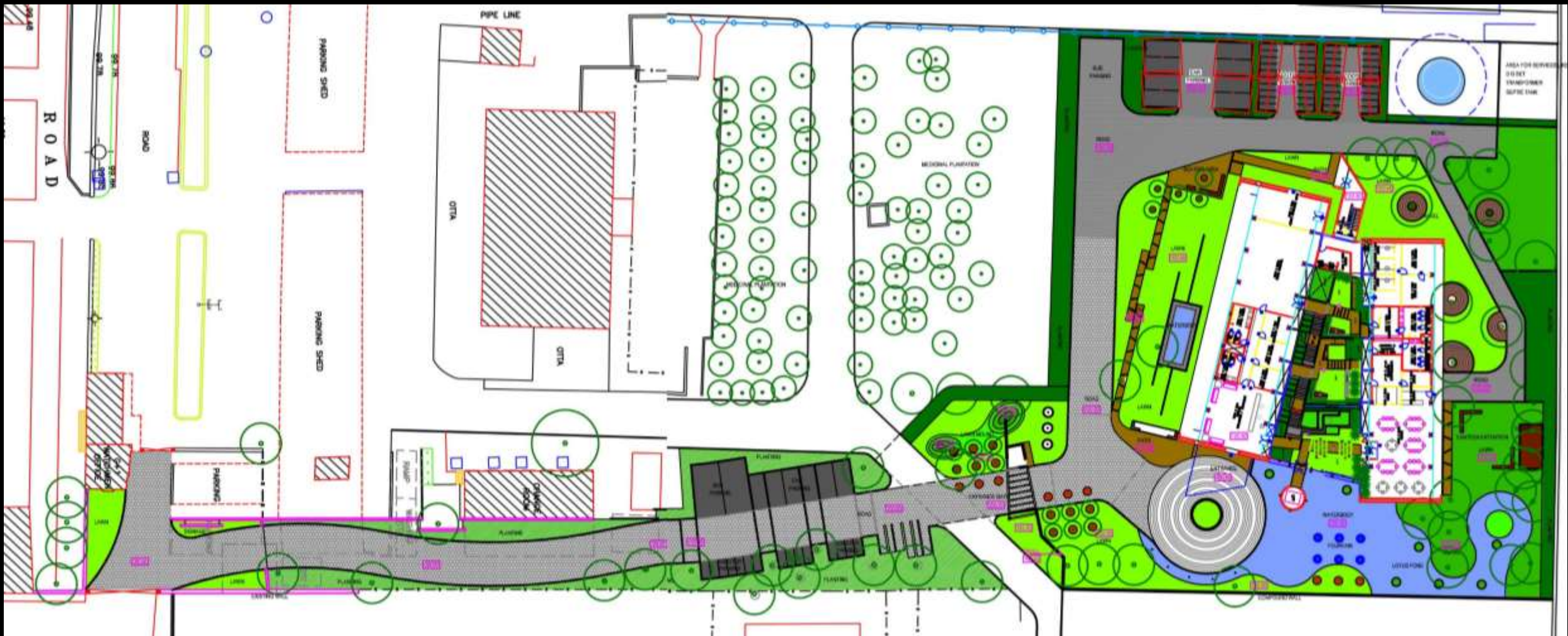
Gera – Imperium Gateway - Ongoing



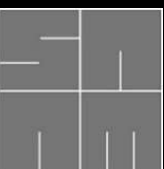




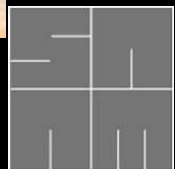




ELANTAS BECK PVT LTD. ( AESA – Trends- A & I – BAI – JK Super cement award)







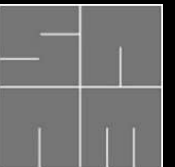




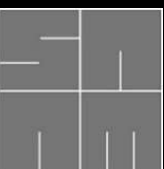




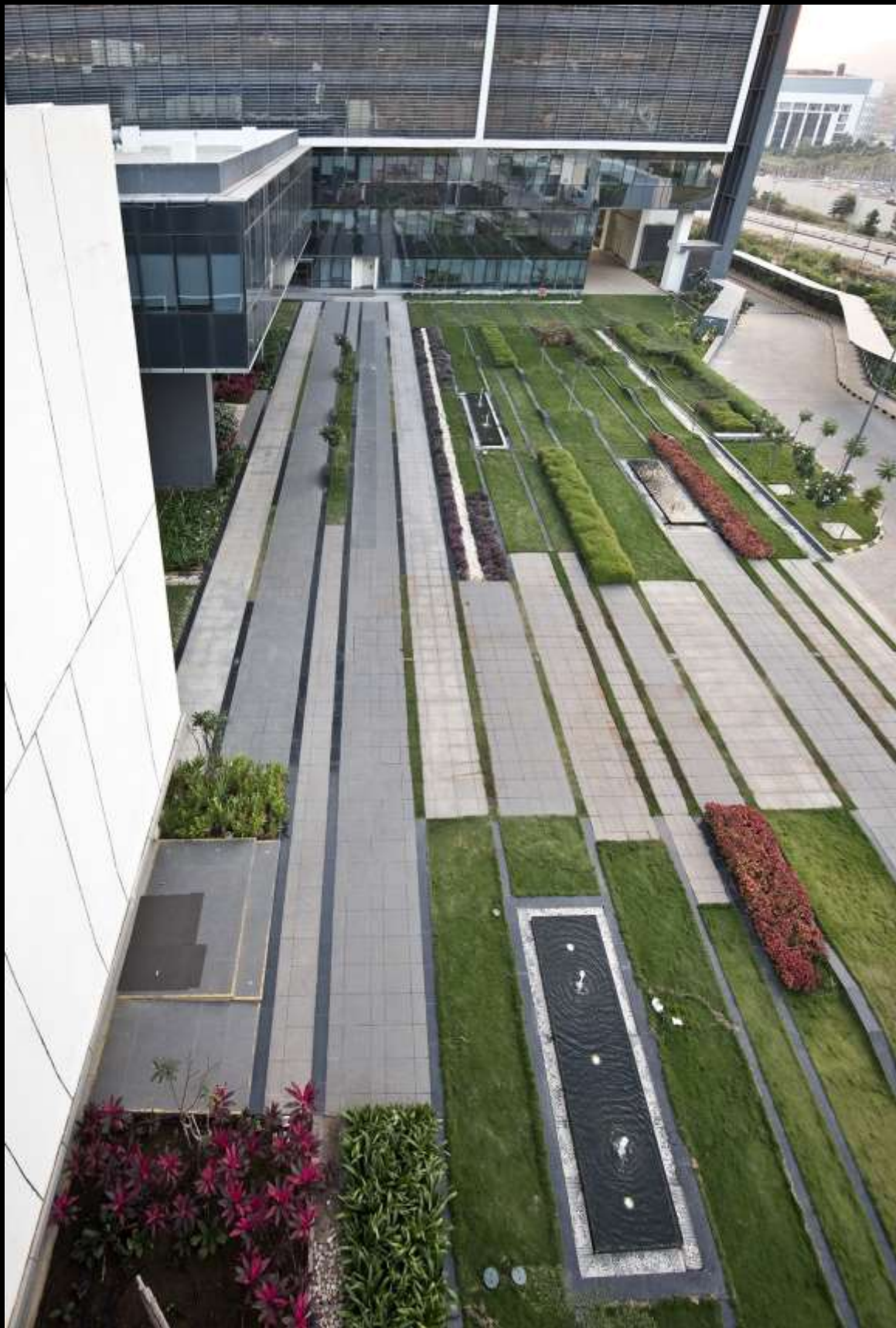
PRAJ GROUP OF INDUSTRIES – Hinjewadi



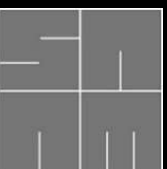








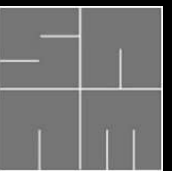
CAPGEMINI – Hinjewadi Campus ( National Award - ISOLA General Design award. 2017)







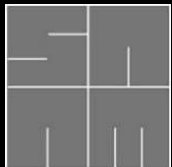
CAPGEMINI – Hinjewadi Campus ( National Award - ISOLA General Design award. 2017)



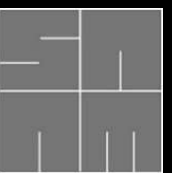




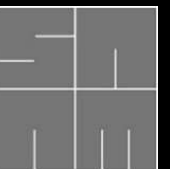
CAPGEMINI – Airoli Campus









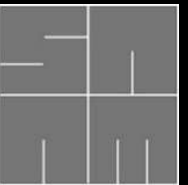




BUNGALOW LANDSCAPE









BUNGALOW-TERRACE LANDSCAPE



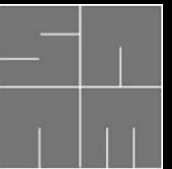
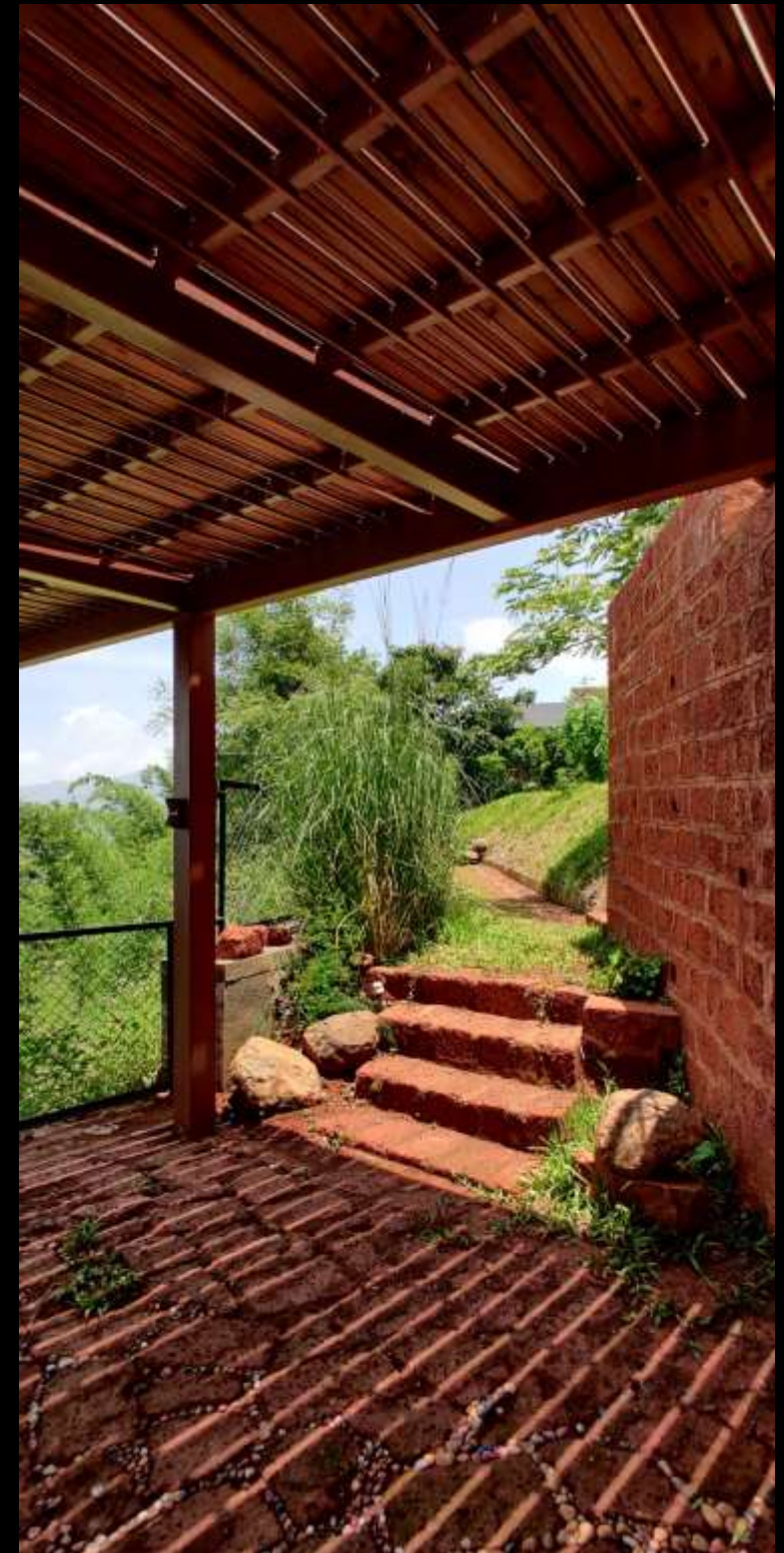


F A R M H O U S E



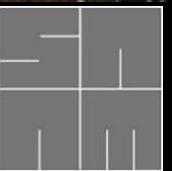


F A R M H O U S E





SHIVAJI MEMORIAL - NDA







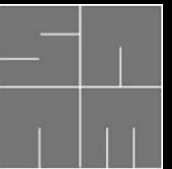


SHRI. BHOSALE MEMORIAL - KARAD





SHRI VILASRAOJI DESHMUKH MEMORIAL





SHRI VILASRAOJI DESHMUKH MEMORIAL

